

DESPIECE / SPARE PARTS

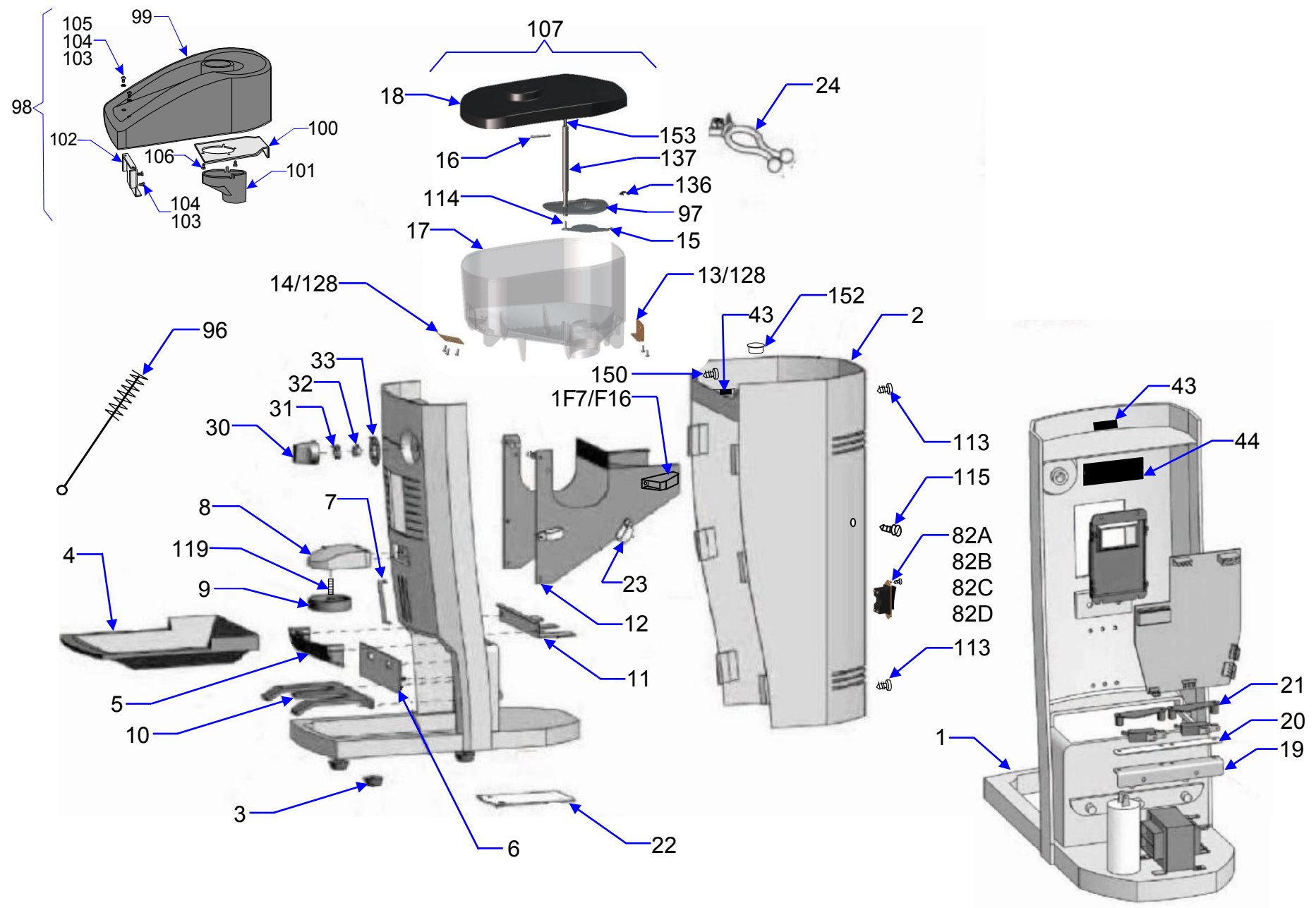
Q9

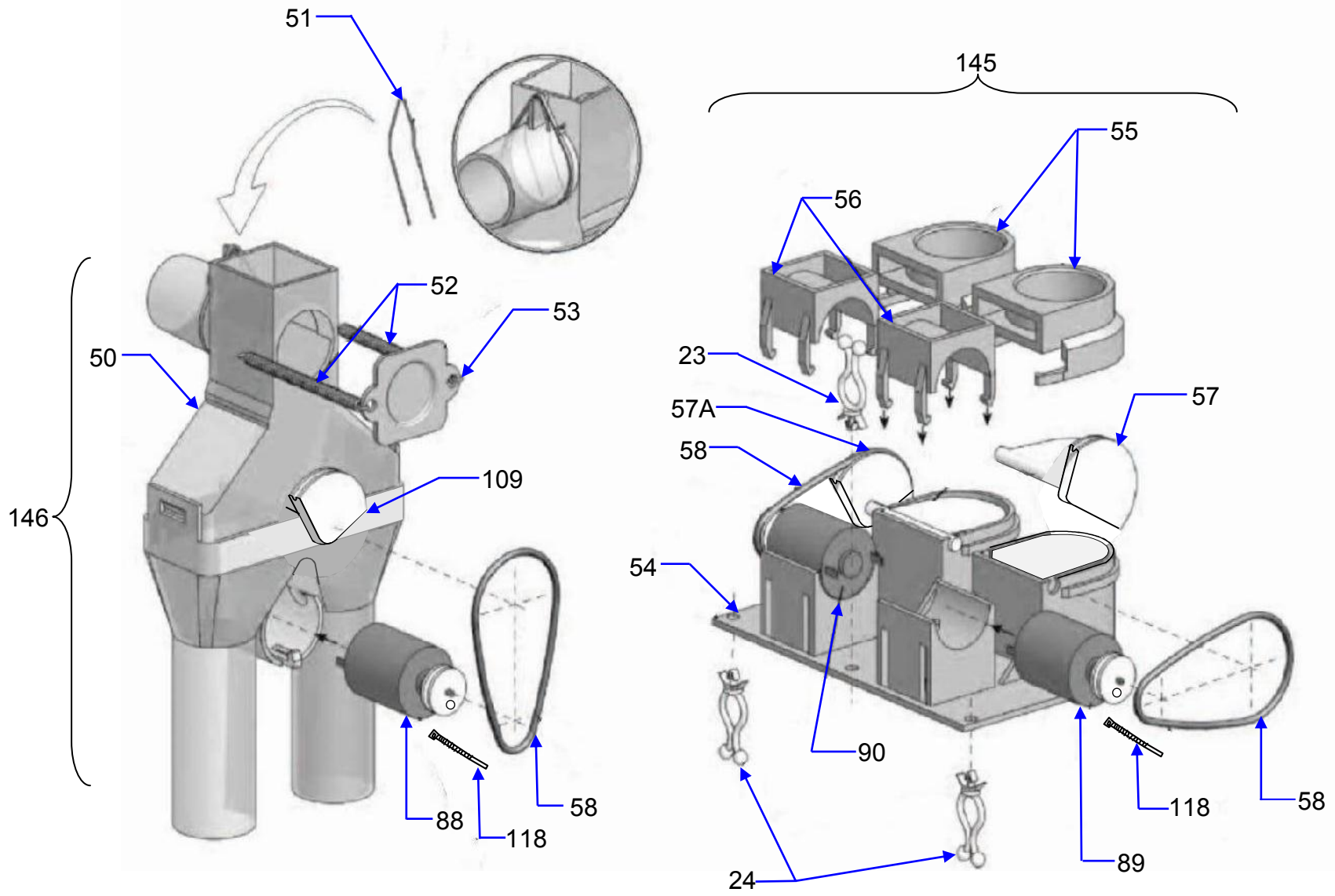


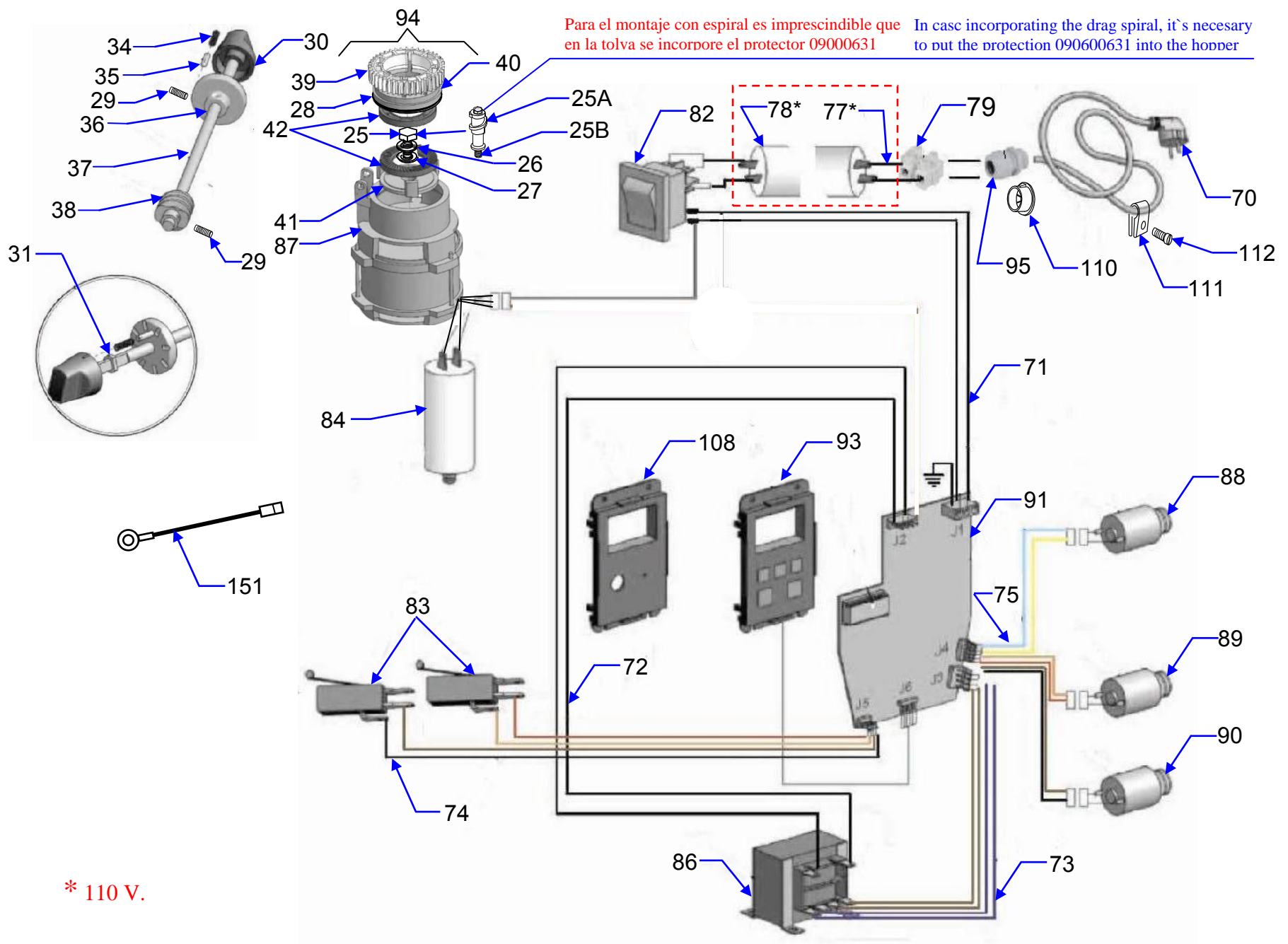
QUALITY ESPRESSO
Capture the Essence

INDICE
INDEX

PAG. 1 - 3,	CARROCERIA Y ACCESORIOS BODY WORK & ACCESSORIES
PAG. 2 - 3,	SISTEMA DOSIFICACIÓN DOSING SYSTEM
PAG. 3 - 3,	COMPONENTES ELECTRICOS Y ACCESORIOS ELECTRICAL COMPONENTS & ACCESSORIES
PAG. 4, 5, -,	TEXTO MOLINO Q9 TEX GRINDER Q9







Mod	Pag	Pos	Ref.Q9	Code	DENOMINACION	DESCRIPTION
Q9	1	01	09000555	11025451	FRONTAL MOLINO (GRIS CLARO)	FRONT (LIGHT GRAY)
Q9	1	01	09000560	1102545B	FRONTAL " (ANTRACITA)	FRONT (ANTHRACITE)
Q9	1	01	09000556	11025452	FRONTAL " (VERDE)	FRONT (GREEN)
Q9	1	01	09100900		FRONTAL " (GRIS OSCURO)	FRONT (DARK GRAY)
Q9	1	01	09100910		FRONTAL " (NEGRO)	FRONT (BLACK)
Q9	1	01	09100920		FRONTAL " (BLANCO)	FRONT (WHITE)
Q9	1	02	09001127	42922135	TAPA POST. MOLINO (ANTRACITA)	COVER REAR (ANTHRACITE)
Q9	1	02	09001125	42922132	TAPA POST. " (VERDE)	COVER REAR (GREEN)
Q9	1	02	09001124	42922131	TAPA POST. " (GRIS CLARO)	COVER REAR (LIGHT GRAY)
Q9	1	02	09101100		TAPA POST. " (GRIS OSCURO)	COVER REAR (DARK GRAY)
Q9	1	02	09101120		TAPA POST. " (BLANCO)	COVER REAR (WHITE)
Q9	1	02	09101110		TAPA POST. " (NEGRO)	COVER REAR (BLACK)
Q9	1	02	09101130		TAPA POST. " C/ INTERRUPT. (BLANCO)	COVER REAR WITH SWITCH (WHITE)
Q9	1	02	09001140		TAPA POST. " C/ INTERRUPT. (GRIS CLARO)	COVER REAR WITH SWITCH (LIGHT GRAY)
Q9	1	02	09001141		TAPA POST. " C/ INTERRUPT. (VERDE)	COVER REAR WITH SWITCH (GREEN)
Q9	1	02	09001142		TAPA POST " .C/ INTERRUPT. (ANTRACITA)	COVER REAR WITH SWITCH (ANTHRACITE)
Q9	1	03	09000300	09710040	PIE DE APOYO REF. 801 DE DTCO	BOTTOM OF SUPPORT
Q9	1	04	09000546	11025311	BANDEJA RECOGE POSOS	GROUNDS TRAY
Q9	1	05	09000548	11025331	PROTECTOR PORTA	PROTECTOR FILTER HOLDER
Q9	1	06	09001121	42922050	PROTECTOR MICRO	MICRO SWITCH PROTECTOR
Q9	1	07	09000547	11025321	PROTECCION GOLPES PORTA	PLASTIC PROTECTOR
Q9	1	08	09000563	11025462	SOPT.PRENSA CAFÉ (VERDE)	PRESS SUPPORT (GREEN)
Q9	1	08	09000562	11025461	SOPT.PRENSA " (GRIS CLARO)	PRESS SUPPORT (LIGHT GRAY)
Q9	1	08	09000564	11025464	SOPT.PRENSA " (ANTRACITA)	PRESS SUPPORT (ANTHRACITE)
Q9	1	08	09101000		SOPT.PRENSA " (GRIS OSCURO)	PRESS SUPPORT (DARK GRAY)
Q9	1	08	09101010		SOPT.PRENSA " (NEGRO)	PRESS SUPPORT (BLACK)
Q9	1	08	09101020		SOPR.PRESNSA " (BLANCO)	PRESS SUPPORT (WHITE)
Q9	1	09	09000948	41105851	PRENSA CAFÉ Ø STANDARD	COFFEE PRESS Ø STANDARD
Q9	1	09	09001136	42923051	PRENSA CAFÉ Ø PEQUEÑO	COFFEE PRESS Ø SMALL
Q9	1	10	09001130	42922151	GUIA PORTAS Ø STANDARD	FILTER HOLDER GUIDE Ø STANDARD
Q9	1	10	09000789	31095450	GUIA PORTAS Ø GRANDE	FILTER HOLDER GUIDE Ø LARGE
Q9	1	11	09000786	31095420	PROTECTOR TRAMPILLAS	DOORS PROTECTOR
Q9	1	12	09000782	31095381	SOPORTE MOTOR	SUPPORT (ENGINE)
Q9	1	13	09000790	31095571	BLOQUEO POST.TOLVA	HOPPER BLOCKING SHEET METAL
Q9	1	14	09000791	31095611	FIJACION DELANTERA TOLVA	HOPPER FRONT FASTENING
Q9	1	15	09104700	42922060	CIERRE TOLVA	CLOSURE HOPPER
Q9	1	16	09000424	10012720	MANDO CIERRE TOLVA	HANDLE CLOUSURE HOPPER
Q9	1	17	09000566	11025501	TOLVA	HOPPER
Q9	1	18	09000549	11025351	TAPA TOLVA M-02	COVER (HOPPER)
Q9	1	19	09000784	31095400	SOPORTE DE MICROS	SUPPORT (MICRO SWITCHES)
Q9	1	20	09000633		AISLADOR MICROS	INSULATOR (MICRO SWITCHES)
Q9	1	21	09000551	11025370-0	SUJECCION MICROS	ATTACHMENT (MICRO SWITCHES)
Q9	1	22	09000632		TAPA INFERIOR	COVERS (MICRO SWITCHES)
Q9	1	23	09000303	09710330	BRIDA FIJA.CABLEADO RICHCO N-7	FASTENING LIRA (RICHCO N-7)
Q9	1-3	24	09000304	09710450	BRIDA FIJA.RICHO STL-250-3-01	FASTENING LIRA (RICHCO STL 250-3-01)
Q9	3	25	09000063		TORNILLO SUJECCION PORTAFRES.INF.	SCREW
Q9	3	25A	09103800		ESPIRAL DE ARRASTRE	DRAG SPIRAL
Q9	3	25B	09103900		EJE ESPIRAL ARRASTRE	DRAG SPIRAL SCREW
Q9	3	26	09000070		ARANDELA GROWER SUJ.PORTAF.INF	WASHER (GROWER)
Q9	3	27	09000084		ARANDELA SUJECCION PORTAFRES.INF.	WASHER
Q9	3	28	09000417		JUNTA TÓRICA	O-RING
Q9	3	29	05198100		ESPARRAGO M3 X 6	SCREW
Q9	1-3	30	09000537	11025211	MANDO REGUL.MOLIDO	ADJUSTMENT HANDLE
Q9	1-3	31	09000299	09710030	CASQ.FIJA.EJE MIKAL SCA0726-224003-4	FIXING RING (MIKAL SCA0726-224003-4)
Q9	1	32	09000422	10012700	CASQUILLO GUIA EJE REGUL.MOLIDO	ADJUSTMENT SHAFT GUIDE BUSHING
Q9	1	33	09001296	82022211	ANILLO FIJACION MANETA REGULACION	ADJUSTMENT HANDLE RING
Q9	3	34	09000682	12001840	MUELLE EJE BLOQUEO	SPING (BLOCKER SHAFT)
Q9	3	35	09000421	10012690	EJE BLOQUEO MANDO REGUL.MOLIDO	BLOCKER SHAFT
Q9	3	36	09419500	10012730	DISCO FIJACION PUNTO MOLIDO	DISK (HANDLE ADJUSMENT)
Q9	3	37	09419110	10012680	EJE REGULACION MOLIDO	SHAFT (ADJUST MILLING)
Q9	3	38	09419200	10012740	SINFIN REGULACION MOLIDO	SPINDLE (ADJUST MILLING)
Q9	3	39	09000543	11025280	CORONA DENTADA REGUL.MOLIDO	TOODHET CROWN (ADJUST MILLING)
Q9	3	40	09000709	17000020	PORTAFRESAS SUPERIOR	MILL WHEEL UPPER SUPPORT
Q9	3	41	09000708	17000010	PORTAFRESAS INFERIOR	MILL WHEEL LOWER SUPPORT
Q9	3	42	09000298	09710020	FRESAS DITTING (JUEGO)	MILL WHEEL PAIR 1 (DITTING)
Q9	1	43	08433900		PROTECTOR (ADHESIVO)	PROTECTOR
Q9	1	44	09000776		ARMAFLEX (ADHESIVO)	ARMAFLEX
	2	50	09001201		DISTRIBUIDOR 1 - 2 CAFES	DISTRIBUTOR (1 & 2 COFFEES)
Q9	2	51	09000739	19019650	MUELLE ATOMIZADOR CAFÉ INCLINADO	ANTI SPLASH NOZZLE INCLINED

Mod	Pag	Pos	Ref.Q9	Code	DENOMINACION	DESCRIPTION
Q9	2	52	09000683	12001850	MUELLE TAPA DISTRIBUIDOR CAFÉ	SPRING (COVER DISTRIBUTOR COFFEE)
Q9	2	53	09000783	31095390	TAPA DISTRIBUIDOR CAFÉ	COVER (DISTRIBUTOR COFFEE)
Q9	2	54	09000542	11025271	SOPORTE TRAMPILLAS	SUPPORT (DOORS)
Q9	2	55	09000540	11025251	TAPA TRAMPILLAS	COVER (DOORS)
Q9	2	56	09000539	11025241	ABRAZADERA SUJECCION MOTORES	CLAMP SUJECCION MOTORS
Q9	2	57	09103300		TRAMPILLA DESCARGA DERECHA	DOOR (NYLON) RIGHT
Q9	2	57A	09103400		TRAMPILLA DESCARGA IZQUIERDA	DOOR (NYLON) LEFT
Q9	2	58	09000302	09710320	CORREA TRANSMISION INT.50,47 X 2,68	INSIDE TRANSMISSION BELTS (50,47X2,68)
Q9	3	70	09000262	04802510	CABLE RED CEE H07RN-F 3xmm	LINE CORD (CEE H07RN-F)
Q9	3	70	09001233		CABLE RED MOLINO 115 V	LINE CORD 115 V.
Q9	3	70	09001232	43216440	CABLE RED MOLINO U.K.	LINE CORD (UK)
Q9	3	70	09001230	43215760	CABLE RED+CLAVIJA 10A AUSTRALIA	LINE CORD (AUSTRALIA)
Q9	3	71	09001214	43213940	CABLEADO ALIMENTACION M02	CABLE
Q9	3	71	09106500		CABLEADO ALIMENTACION M02 115V.	CABLE 115V.
Q9	3	72	09001215	43213950	CABLEADO FUERZA M02	CABLE
Q9	3	73	09001216	43213960	CABLEADO TRANSFORMADOR M02	TRANSFORMER M02 CABLE
Q9	3	74	09001218	43213980	CABLEADO MICROS CP	MICROS CP CABLE
Q9	3	75	09001217		CABLEADO MOTORES M02	MOTORS M02 CABLE
Q9	3	77	09001261	43221450	CABLEADO FILTRO MOLLI.JAPON	FILTER GRINDER CABLE (JAPANESE)
Q9	3	78	09000275	04803780	Filtro Procond Elettronica Ref:411524410	ELECTRICAL FILTER
Q9	3	79	09000265	04802690	REGLETA ELETTRO GIBI PA 76/12	TERMINAL BLOCK
Q9	3	82	07967020		INTERRUPTOR	MAIN SWITCH
Q9	1	82A	09000210		INTERRUPTOR TRASERO 115 V.(E.U.)	BACK MAIN SWITCH 115 V. (E.U.)
Q9	1	82B	09000194		CAPUCHON PROTECTOR 115V.	PROTECTOR (MAIN SWITCH 115 V.)
Q9	1	82C	09000058		SEPARADOR INTERRUPTOR 115 V.	SPACER M.4 (MAIN SWITCH 115V.)
Q9	1	82D	09000879		CHAPA HUECA INTERRUPTOR 115 V.	SUPPORT (MAIN SWITCH 115V.)
Q9	3	83	09000208	04001130	MICRORRUPTOR OMRON V-166-1C5	MICRO SWITCH
Q9	3	84	09000117	03203120	COND. ARRANQUE 16uF 450V M8 UL	START UP CONDENSER (16mF 450V M8)
Q9	3	84	09000125	03203950	COND.ARRANQ.70uF250VM8 45X117mm	START UP CONDENSER (70mF 250V M8)
Q9	3	86	09000224	04300700	TRANSFORM.100V / 18V.	TRANSFORMER (100V - 18V.)
Q9	3	86	09000223	04300670	TRANSFORM.110V / 18V.	TRANSFORMER (110V - 18V.)
Q9	3	86	09000226	04300720	TRANSFORM.220V / 18V.	TRANSFORMER (220V - 18V.)
Q9	3	86	09000222	04300660	TRANSFORM.230V / 18V.	TRANSFORMER (230V - 18V.)
Q9	3	87	09001051	41166750	MOTOR 100V50/60 B.RE	MOTOR 100V50/60 B.RE
Q9	3	87	09001050	41166740	MOTOR 115V60 UL B.RE	MOTOR 115V60 UL B.RE
Q9	3	87	09001049	41166730	MOTOR 220V60 B.REDON	MOTOR 220V60 B.REDON
Q9	3	87	09001048	41166710	MOTOR 230V50/60 B.RE	MOTOR 230V50/60 B.RE
Q9	3	88	09001131	42922180	MOTOR MARIPOSA-POL COND	MOTOR WITH PULLEY
Q9	3	89	09001132	42922200	MOTOR/1 M02 Y POL COND	MOTOR WITH PULLEY
Q9	3	90	09001133	42922210	MOTOR/2 M02 Y POL COND	MOTOR WITH PULLEY
Q9	3	91	08506200	43310420	KIT TARJETA CONTROL 230V./115V. (SIN TRIAC)	KIT MAIN BOARD 230V. / 115V. (WITHOUT TRIAC)
Q9	3	91	08560000 *		" " " 110V. (CON TRIAC) *	" " " 110V. (WITH TRIAC) *
Q9	3	92	09001277	43523590	EPROM 27C010 PROG.	EPROM 27C010 PROG.
Q9	3	92	09001278	43524660	EPROM 27C010 PROG.CP-A SIM	EPROM 27C010 PROG.CP-A SIM
Q9	3	93	09001137	42923151	TECLADO CP	KEY BOARD
Q9	3	94	09101600		CJTO. MOTOR	MOTOR, ASSY
Q9	3	95	09000263	04802520	PASAMUR. SKINTOP (ANTERIOR 07/2009)	STRAIN RELIEF (PREVIOS 07 / 2009)
Q9	1	96	09000410	09716130	CEPILLO LIMPIEZA	CLEANING PLANE
Q9	1	97	09000631		PROTECTOR ESPIRAL	PROTECTION SPIRAL
Q9	1	98	NT0929		KIT ADAPTADOR DEPOSITO CAFÉ	KIT ADAPTER (DEPOSIT COFFEE)
Q9	1	99	09102100		ADAPTADOR DEPOSITO CAFÉ	ADAPTER (DEPOSIT COFFEE)
Q9	1	100	09102400		PLANCHA DESVIADOR	SHIFTING SUPPORT
Q9	1	101	09102200		DESVIADOR ADAPTADOR DEPOSITO	SHIFTING ADAPTER (DEPOSIT)
Q9	1	102	09102500		PLANCHA FRENTE ADAPTADOR	ADAPTER FRONT SUPPORT
Q9	1	103	04596601		TORNILLO M4 X 12	SCREW
Q9	1	104	05187604		TUERCA M4	NUT
Q9	1	105	02161206		ARANDELA 4,3 X 9 X 0,8	WASHER
Q9	1	106	04592101		TORNILLO AUTOR. 4,3 X 13	SCREW
Q9	1	107	09001108		CJTO. TOLVA CON PROTECTOR	HOPPER ASSEMBLY + PROTECTION
Q9	3	108	09000553		SOPORTE ELECTR. DISPLAY	DISPLAY SUPPORT
Q9	2	109	09103200		MARIPOSA M-2	DOOR M-2
Q9	3	110	09103600		PRESA ESTOPA MOLINO (07 / 2009)	STRAIN RELIEF (07 / 2009)
Q9	3	111	09103500		PRESA CABLES MOOLINO (07 / 2009)	FASTENING LIRA (07 / 2009)
Q9	3	112	04591600		TORNILLO AL. M.5 X 16 (07 / 2009)	SCREW AL. M.5 X 16 (07 / 2009)
Q9	1	113	04548000		TORNILLO M.5 X 12 (INOX.)	SCREW M.5 X 12 (STEEL)
Q9	1	114	04596601		TORNILLO C/ PLANA M.4 x 12	SCREW
Q9	1	115	04592101		TORNILLO C/PLANA 4,2 X 13	SCREW 4,2 X 13
Q9	1	116	09103700		DISTANCIAL SOPORTE TAPA TRASERA	SUPPORT FIXATION (REAR PLATE)
Q9	1	117	08202802		REMACHE	RIVET

